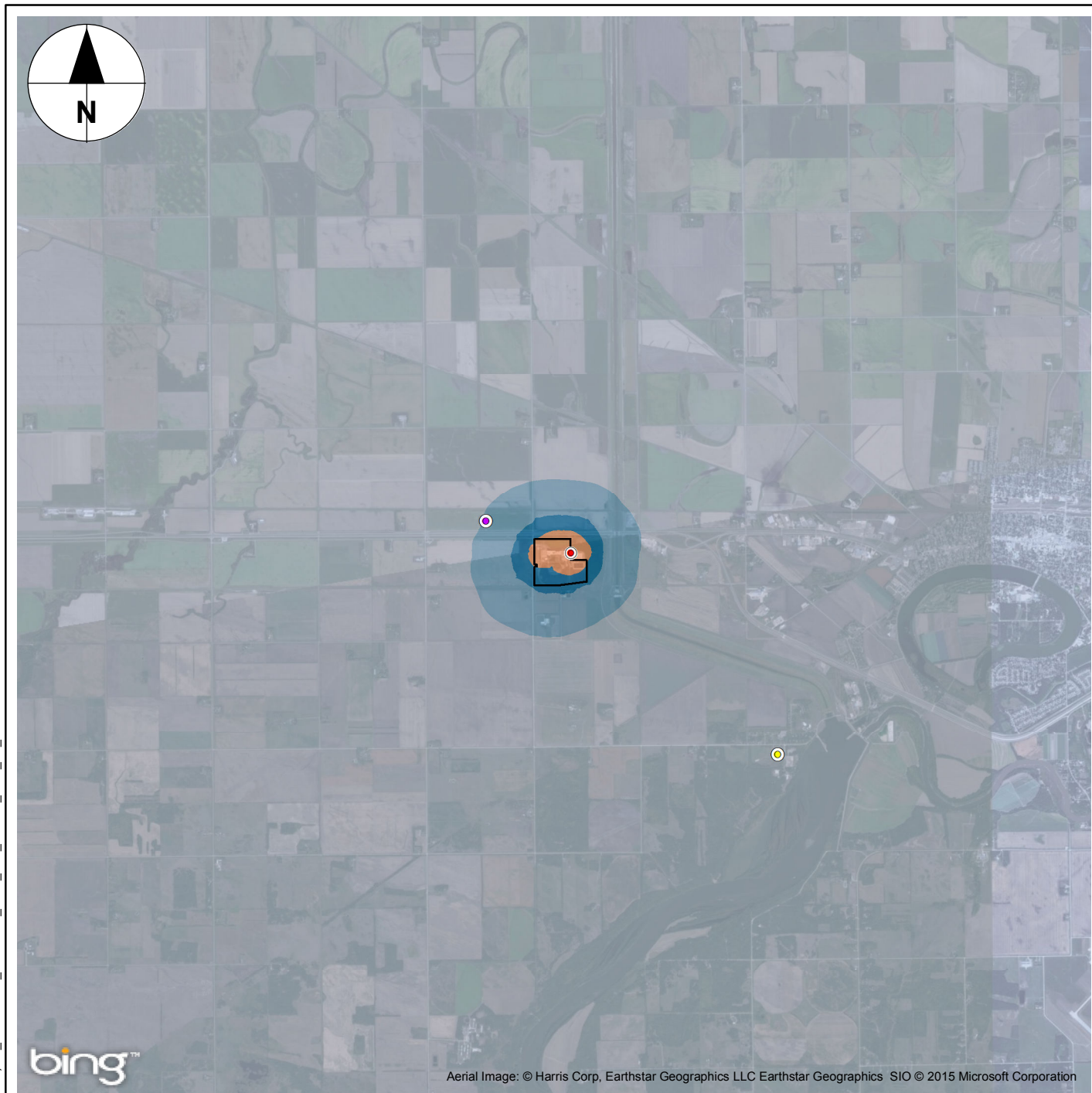


Attachment A

Isopleths: Maximum Predicted
Concentrations



bing™

Aerial Image: © Harris Corp, Earthstar Geographics LLC Earthstar Geographics SIO © 2015 Microsoft Corporation

Legend

- Site Property
- Maximum Concentration
- Discrete Receptors**
- Dakota Tipi
- Nearest Residence

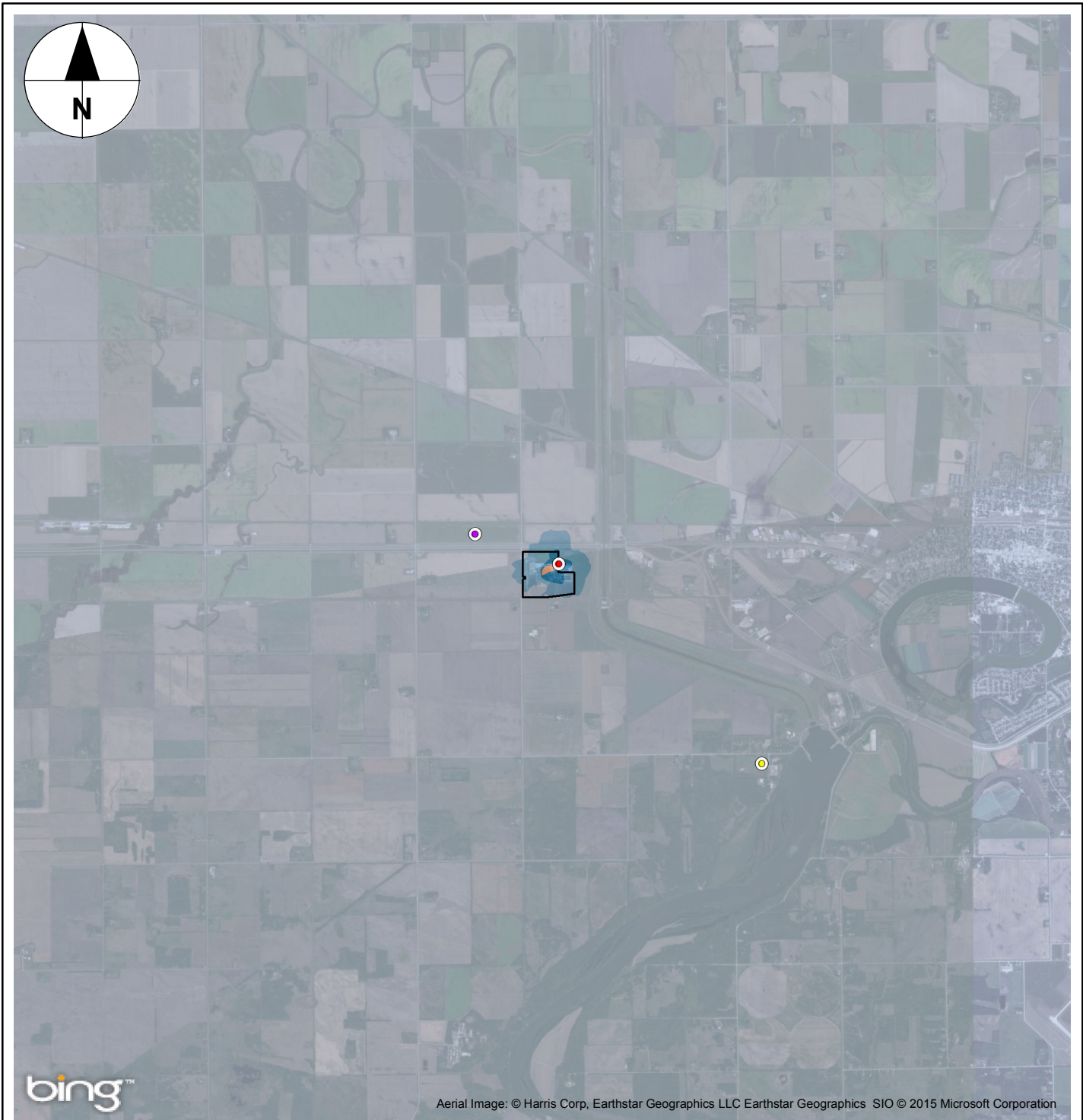
NO₂ (µg/m³)

Maximum Acceptable Level (MAL) = 400 µg/m³
Maximum Tolerable Level (MTL) = 1000 µg/m³

	<132 (<33% of MAL)
	132-264 (33%-66% of MAL)
	264-400 (66%-100% of MAL)
	400-1000 (100% of MAL-100% of MTL)
	>1000 (>100% of MTL)

850 0 850 1,700

 1:90,000
 NAD 1983 UTM Zone 14N



Aerial Image: © Harris Corp, Earthstar Geographics LLC Earthstar Geographics SIO © 2015 Microsoft Corporation

Legend

- Site Property
- Maximum Concentration
- Discrete Receptors**
- Dakota Tipi
- Nearest Residence

NO₂ (µg/m³)

Maximum Acceptable Level (MAL) = 200 µg/m³

- <66 (<33% of MAL)
- 66-132 (33%-66% of MAL)
- 132-200 (66%-100% of MAL)
- >200 (>100% of MAL)

850 0 850 1,700
m

1:90,000


NAD 1983 UTM Zone 14N



bing™

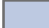




Aerial Image: © Harris Corp, Earthstar Geographics LLC Earthstar Geographics SIO © 2015 Microsoft Corporation

Legend

-  Site Property
-  Maximum Concentration
- Discrete Receptors**
-  Dakota Tipi
-  Nearest Residence

NO₂ (µg/m³)

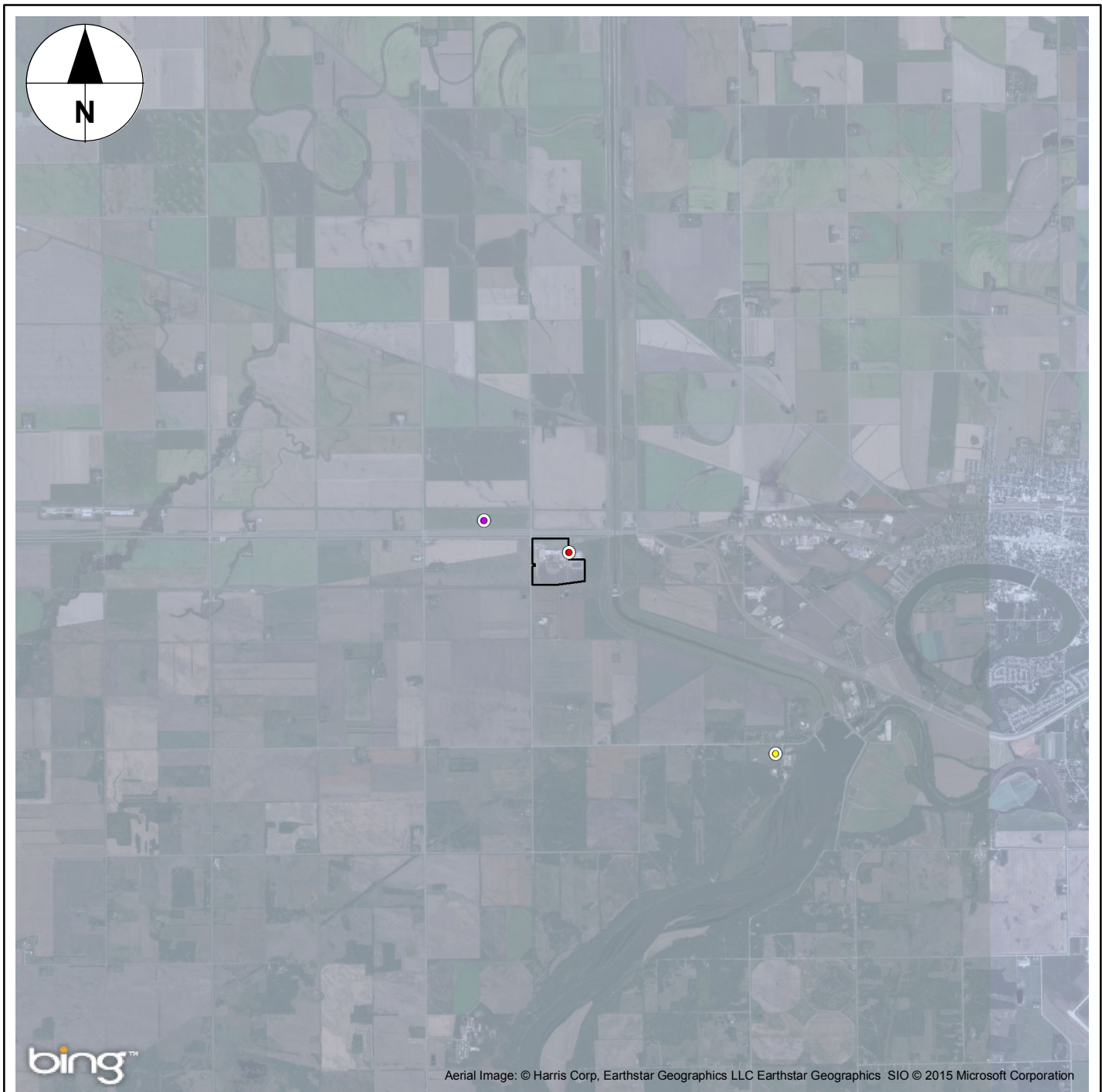
Maximum Desirable Level (MDL) = 60 µg/m³
Maximum Acceptable Level (MAL) = 100 µg/m³

	<20 (33% of MDL)
	20-40 (33%-66% of MDL)
	40-60 (66%-100% of MDL)
	60-100 (100% of MDL-100% of MAL)
	>100 (>100% of MAL)

850 0 850 1,700
m

1:90,000

NAD 1983 UTM Zone 14N



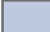




Aerial Image: © Harris Corp, Earthstar Geographics LLC Earthstar Geographics SIO © 2015 Microsoft Corporation


Legend

-  Site Property
-  Maximum Concentration
- Discrete Receptors**
-  Dakota Tipi
-  Nearest Residence

CO (mg/m³)

Maximum Desirable Level (MDL) = 15 mg/m³
Maximum Acceptable Level (MAL) = 35 mg/m³

-  <5 (<33% of MDL)
-  5-10 (33%-66% of MDL)
-  10-15 (66%-100% of MDL)
-  15-35 (100% of MDL-100% of MAL)
-  >35 (>100% of MAL)

850 0 850 1,700

 1:90,000
 NAD 1983 UTM Zone 14N



bing™

Aerial Image: © Harris Corp, Earthstar Geographics LLC Earthstar Geographics SIO © 2015 Microsoft Corporation

Legend

- Site Property
- Maximum Concentration
- Discrete Receptors**
- Dakota Tipi
- Nearest Residence

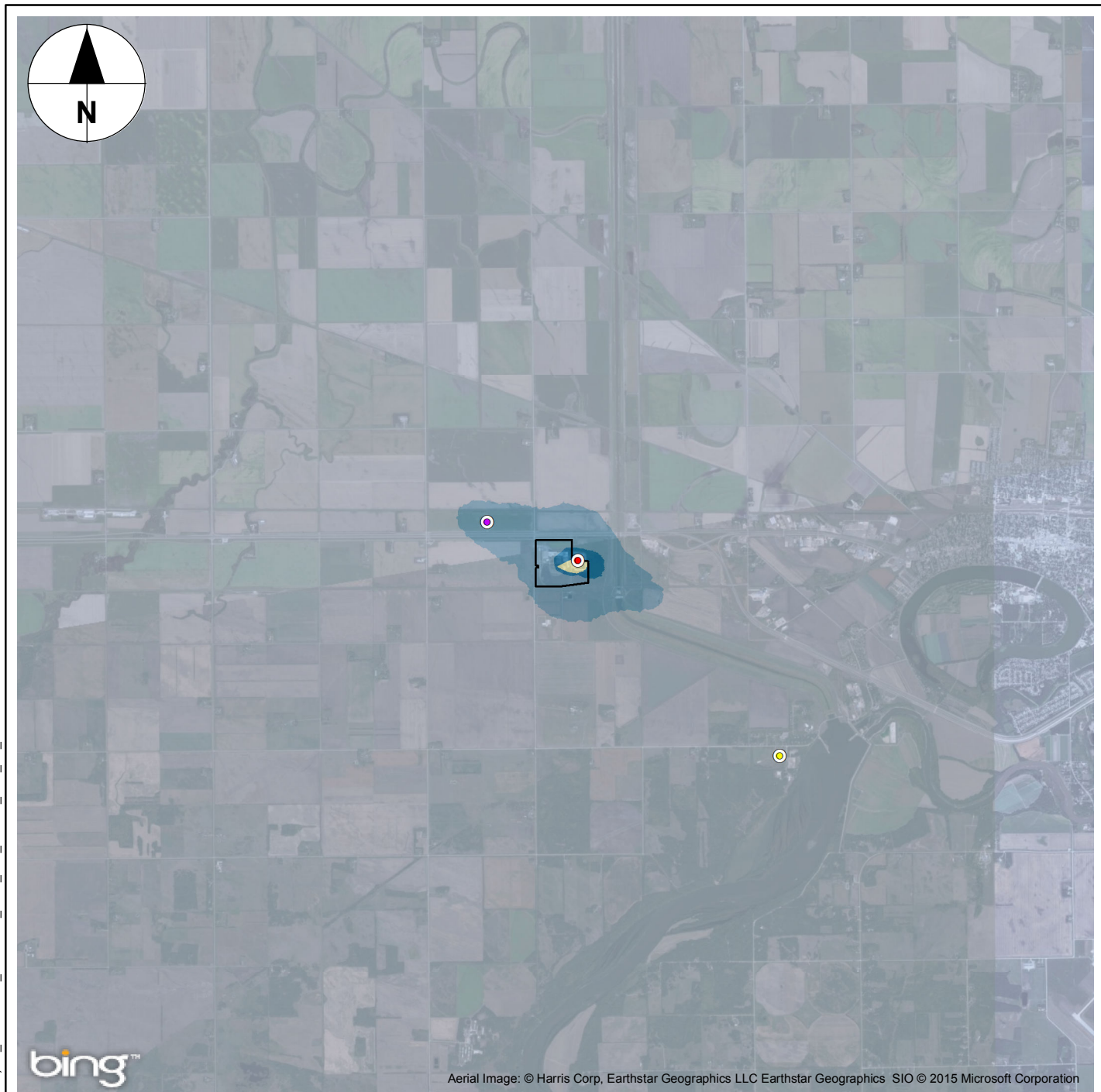
CO (mg/m³)

Maximum Desirable Level (MDL) = 6 mg/m³
Maximum Acceptable Level (MAL) = 15 mg/m³
Maximum Tolerable Level (MTL) = 20 mg/m³

	<2 (<33% of MDL)
	2-4 (33%-66% of MDL)
	4-6 (66%-100% of MDL)
	6-15 (100% of MDL-100% of MAL)
	15-20 (100% of MAL-100% of MTL)
	>20 (>100% of MTL)

850 0 850 1,700

 1:90,000
 NAD 1983 UTM Zone 14N



Aerial Image: © Harris Corp, Earthstar Geographics LLC Earthstar Geographics SIO © 2015 Microsoft Corporation

Legend

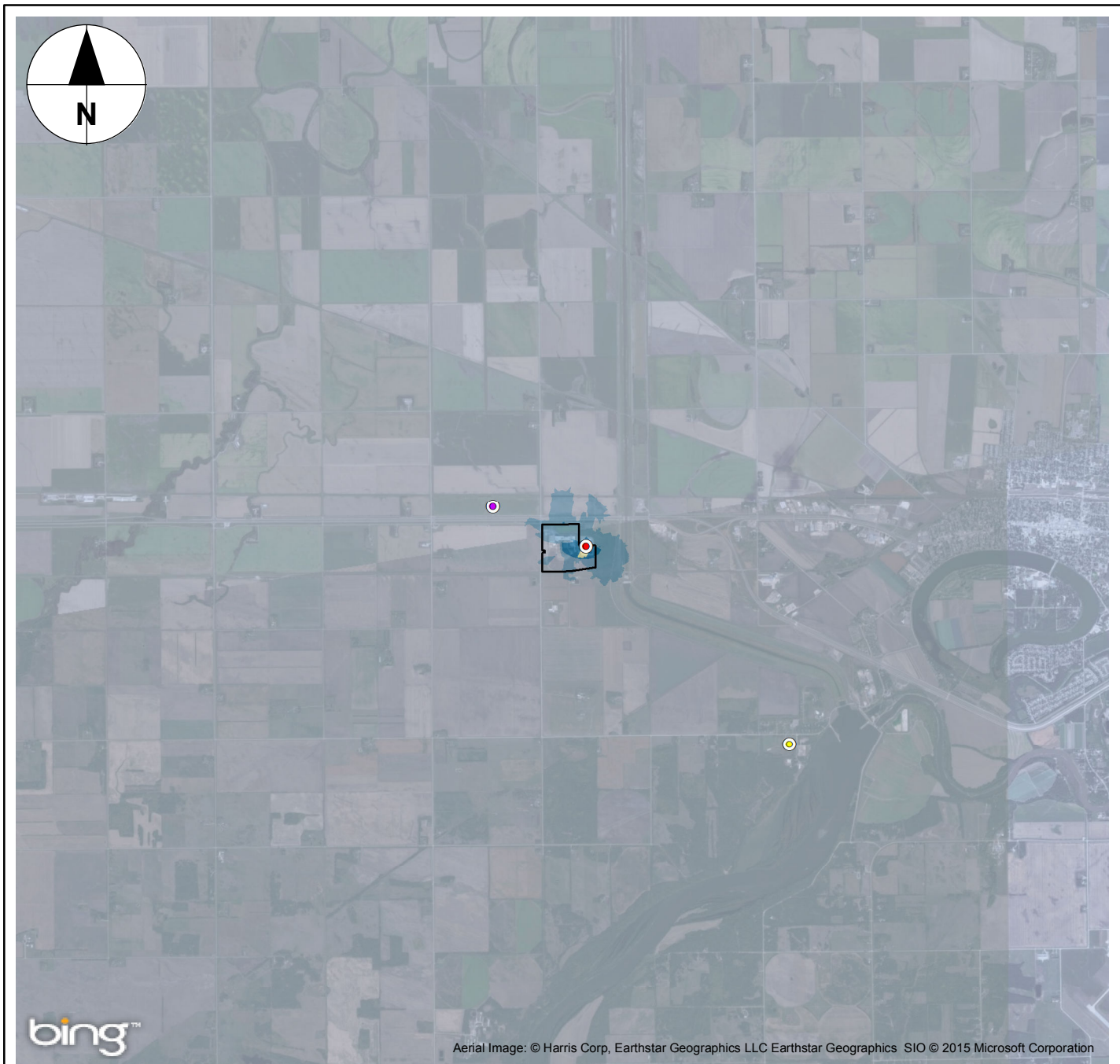
- Site Property
- Maximum Concentration
- Discrete Receptors**
- Dakota Tipi
- Nearest Residence

SO₂ (µg/m³)

Maximum Desirable Level (MDL) = 450 µg/m³
Maximum Acceptable Level (MAL) = 900 µg/m³

	<148.5 (<33% of MDL)
	148.5-297 (33%-66% of MDL)
	297-450 (66%-100% of MDL)
	450-900 (100% of MDL-100% of MAL)
	>900 (>100% of MAL)

850 0 850 1,700
 m
 1:90,000
 NAD 1983 UTM Zone 14N



bing™

Aerial Image: © Harris Corp, Earthstar Geographics LLC Earthstar Geographics SIO © 2015 Microsoft Corporation

Legend

- Site Property
- Maximum Concentration
- Discrete Receptors**
- Dakota Tipi
- Nearest Residence

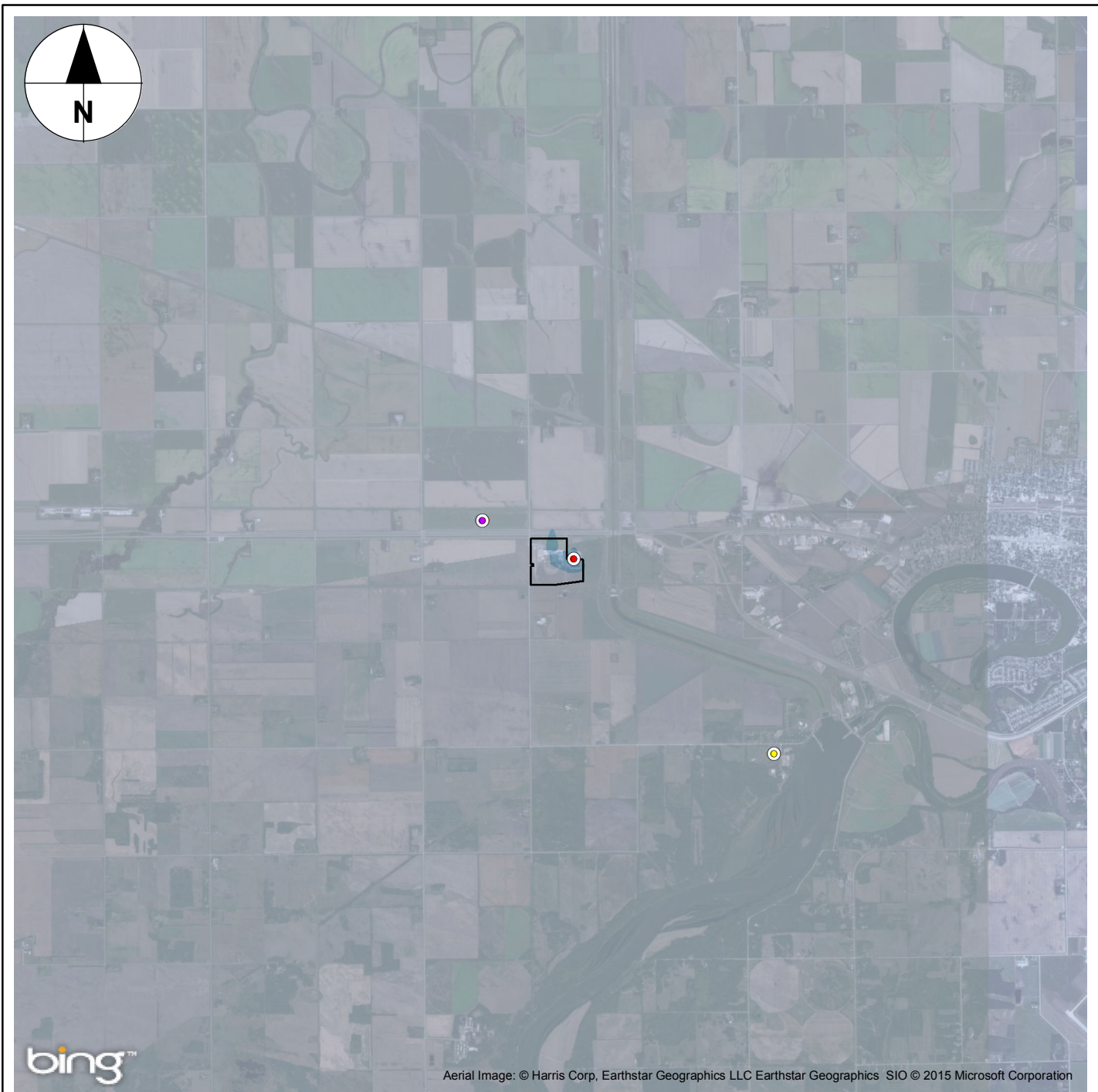
SO₂ (µg/m³)

Maximum Desirable Level (MDL) = 150 µg/m³
Maximum Acceptable Level (MAL) = 300 µg/m³
Maximum Tolerable Level (MTL) = 800 µg/m³

	<50 (<33% of MDL)
	50-100 (33%-66% of MDL)
	100-150 (66%-100% of MDL)
	150-300 (100% of MDL-100% of MAL)
	300-800 (100% of MAL-100% of MTL)
	>800 (>100% of MTL)

850 0 850 1,700

 1:90,000
 NAD 1983 UTM Zone 14N



bing™






Aerial Image: © Harris Corp, Earthstar Geographics LLC Earthstar Geographics SIO © 2015 Microsoft Corporation


Legend

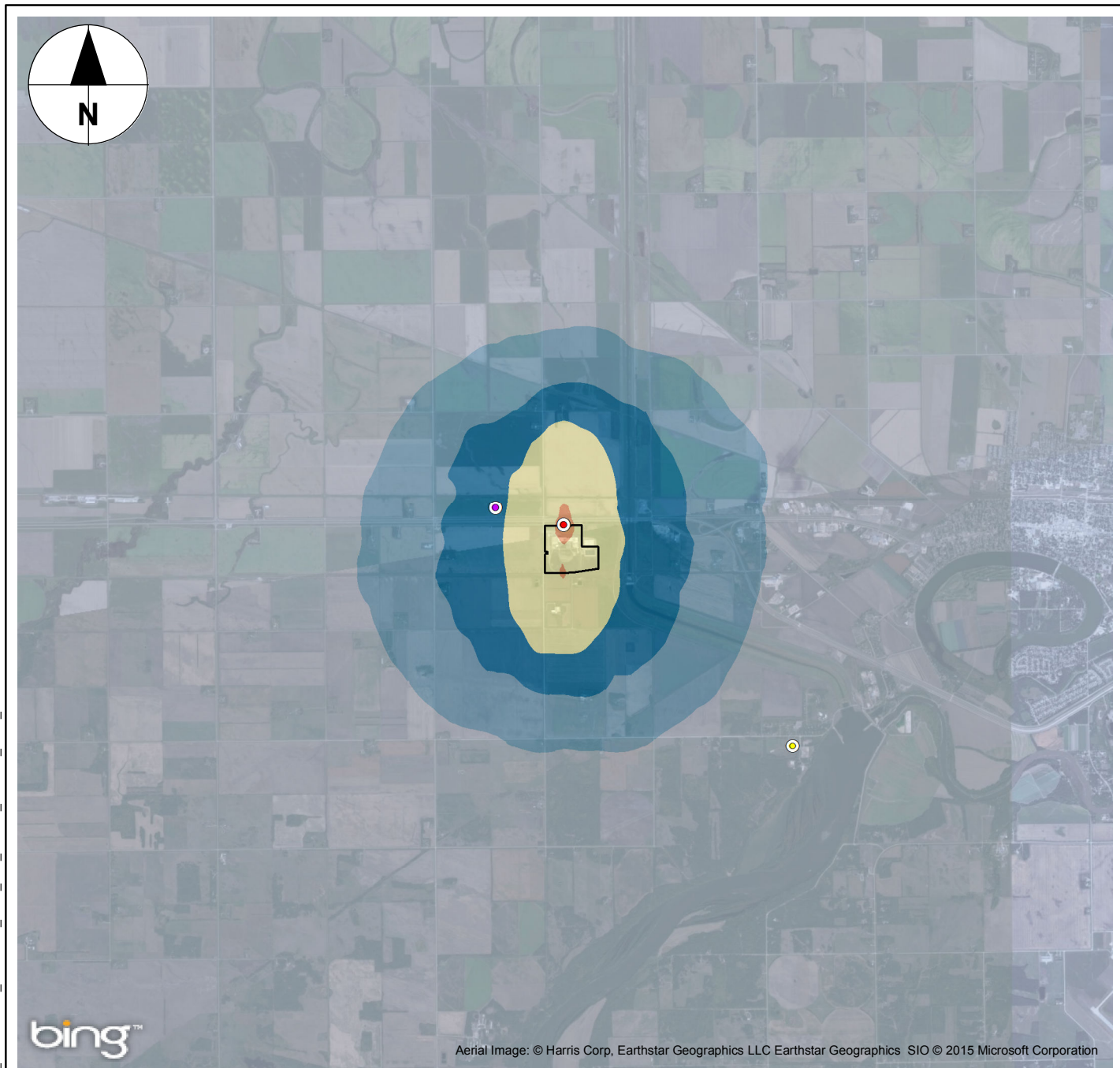
-  Site Property
-  Maximum Concentration
- Discrete Receptors**
-  Dakota Tipi
-  Nearest Residence

SO₂ (µg/m³)

Maximum Desirable Level (MDL) = 30 µg/m³
Maximum Acceptable Level (MAL) = 60 µg/m³

	<10 (<33% of MDL)
	10-20 (33%-66% of MDL)
	20-30 (66%-100% of MDL)
	30-60 (100% of MDL-100% of MAL)
	>60 (>100% of MAL)

850 0 850 1,700

 1:90,000
 NAD 1983 UTM Zone 14N



Aerial Image: © Harris Corp, Earthstar Geographics LLC Earthstar Geographics SIO © 2015 Microsoft Corporation

Legend

- Site Property
- Maximum Concentration

Discrete Receptors

- Dakota Tipi
- Nearest Residence

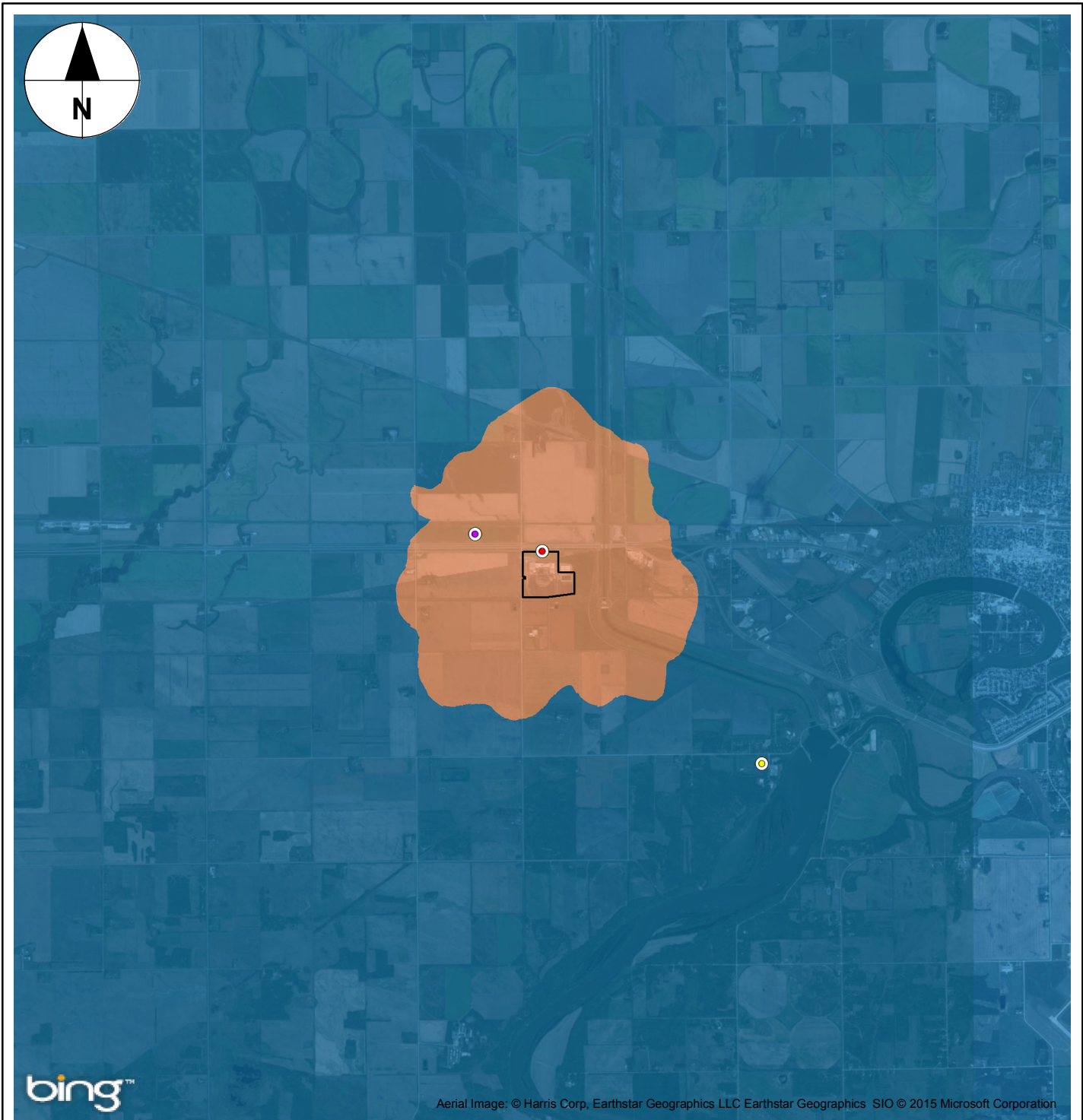
ODOUR (ODOUR UNITS)

Maximum Desirable Level (MDL) = <1 Odour Unit
Maximum Acceptable Residential Level (MARL) = 2 Odour Units
Maximum Acceptable Industrial Level (MAIL) = 7 Odour Units

<0.33 (33% of MDL)
0.33-0.66 (33%-66% of MDL)
0.66-1 (66%-100% of MDL)
1-2 (100% of MDL-100% of MARL)
2-7 (100% of MARL-100% of MAIL)
>7 (>100% of MAIL)

850 0 850 1,700

 1:90,000
 NAD 1983 UTM Zone 14N



bing™

Aerial Image: © Harris Corp, Earthstar Geographics LLC Earthstar Geographics SIO © 2015 Microsoft Corporation

Legend

- Site Property
- Maximum Concentration
- Discrete Receptors**
- Dakota Tipi
- Nearest Residence

PM₁₀ (µg/m³)

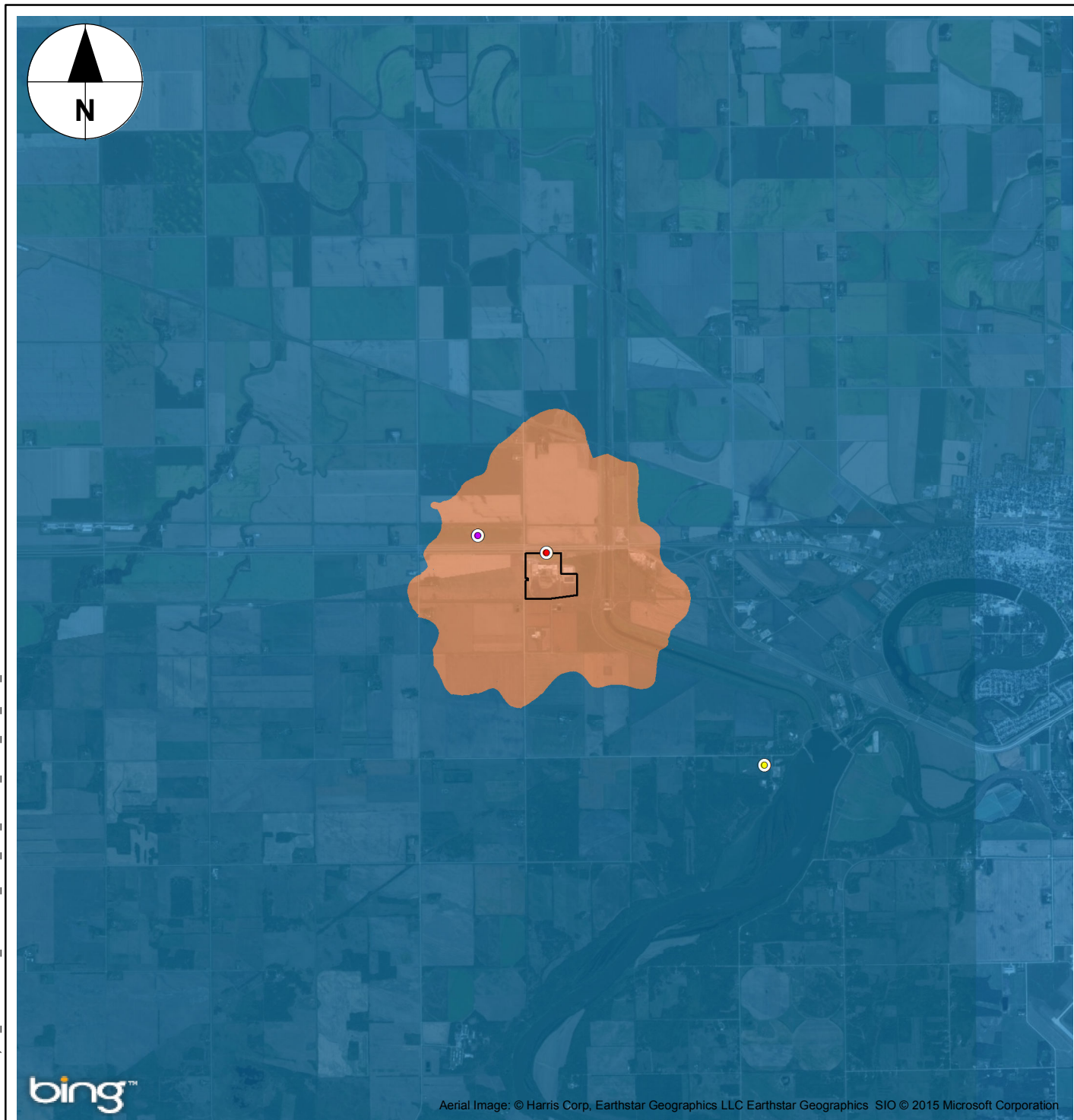
Maximum Acceptable Level (MAL) = 50 µg/m³

	<16.5 (<33% of MAL)
	16.5-33 (33%-66% of MAL)
	33-50 (66%-100% of MAL)
	>50 (>100% of MAL)

850 0 850 1,700
m

1:90,000

NAD 1983 UTM Zone 14N



bing™

Aerial Image: © Harris Corp, Earthstar Geographics LLC Earthstar Geographics SIO © 2015 Microsoft Corporation

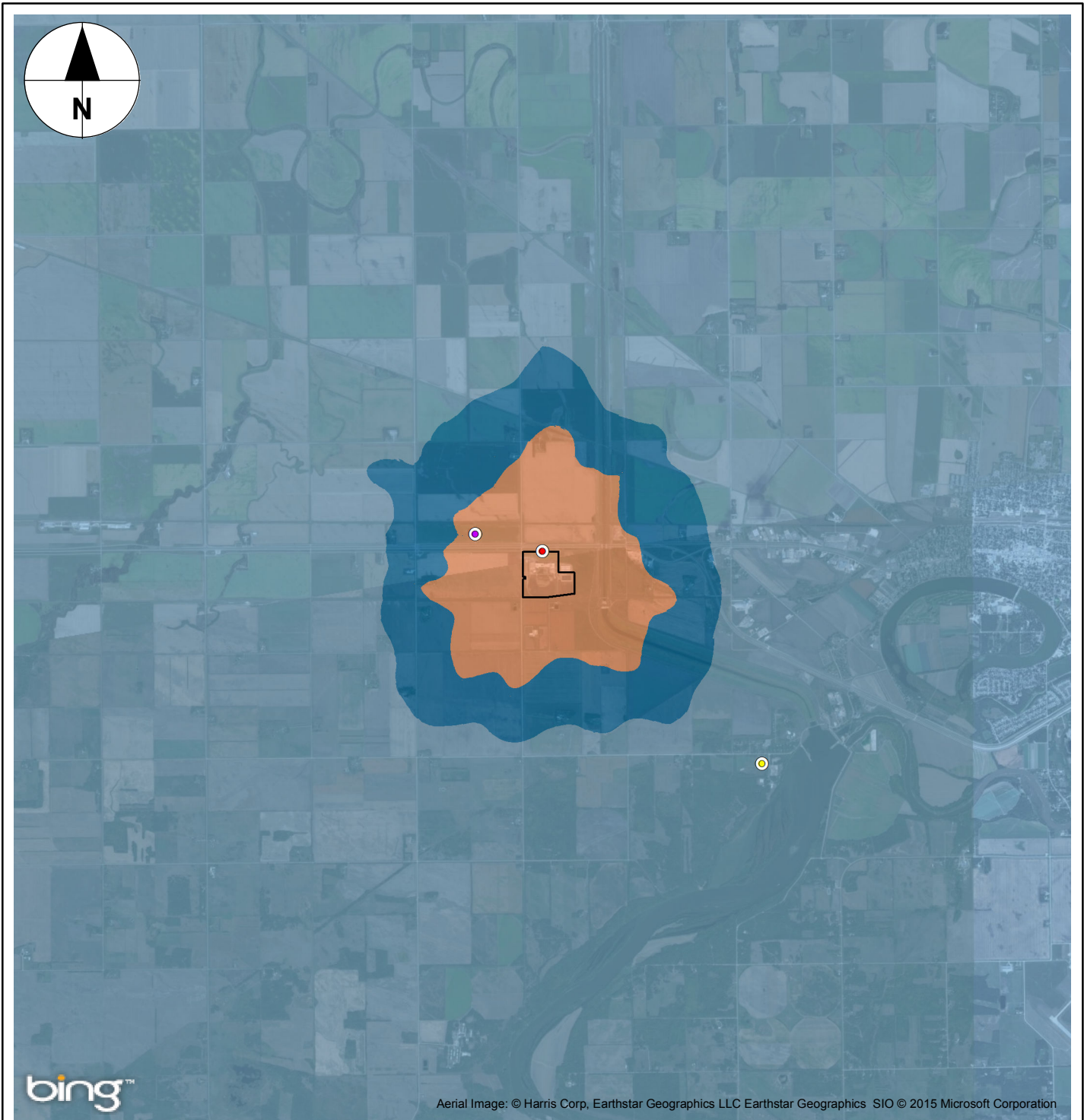
Legend

- Site Property
- Maximum Concentration
- Discrete Receptors**
- Dakota Tipi
- Nearest Residence

PM₁₀ (µg/m³)
Maximum Acceptable Level (MAL) = 50 µg/m³

	<16.5 (<33% of MAL)
	16.5-33 (33%-66% of MAL)
	33-50 (66%-100% of MAL)
	>50 (>100% of MAL)

850 0 850 1,700
 m
 1:90,000
 NAD 1983 UTM Zone 14N



Aerial Image: © Harris Corp, Earthstar Geographics LLC Earthstar Geographics SIO © 2015 Microsoft Corporation

Legend

- Site Property
- Maximum Concentration
- Discrete Receptors
- Dakota Tipi
- Nearest Residence

PM_{2.5} (µg/m³)

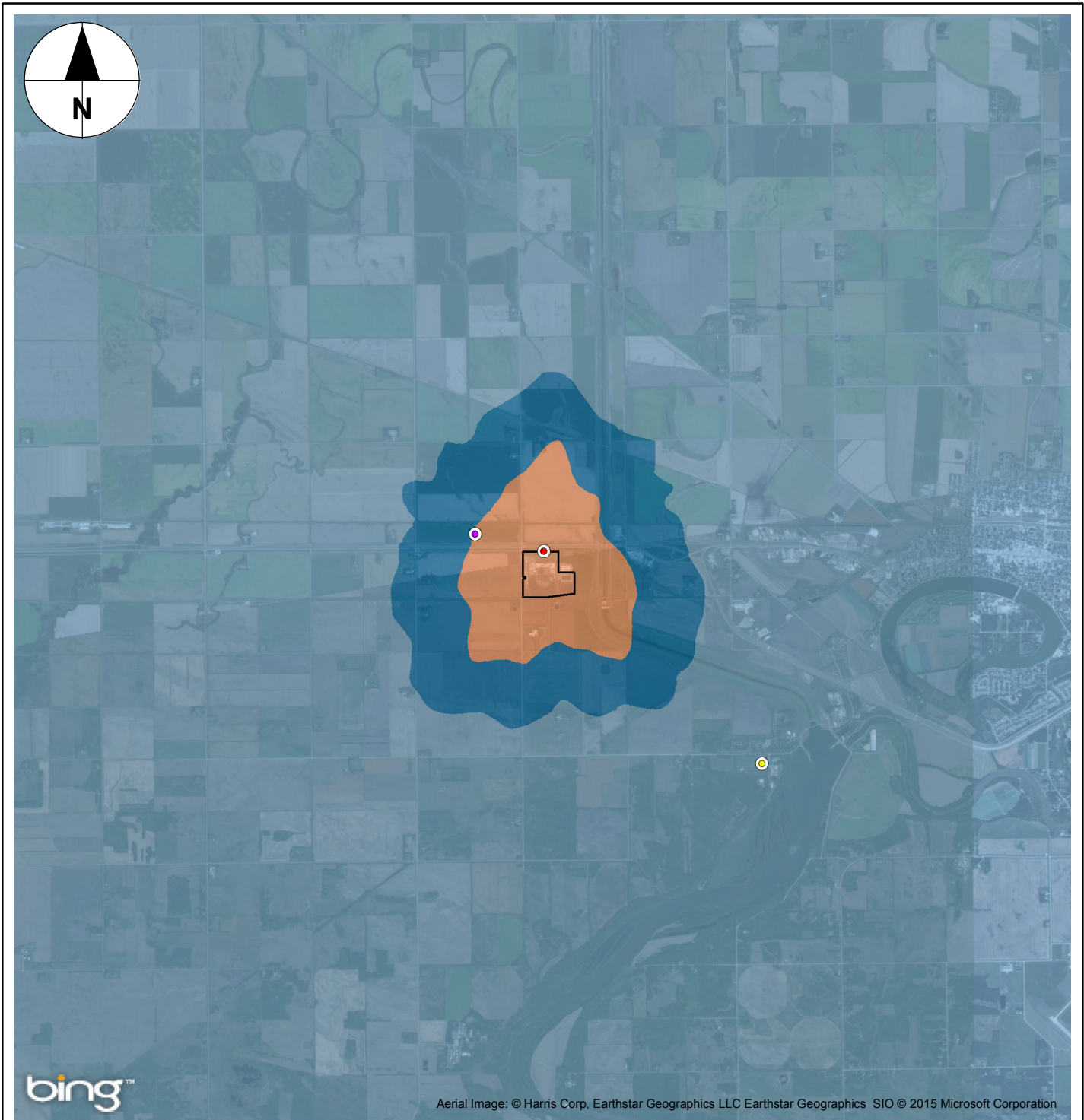
Maximum Acceptable Level (MAL) = 30 µg/m³

- <10 (<33% of MAL)
- 10-20 (33%-66% of MAL)
- 20-30 (66%-100% of MAL)
- >30 (>100% of MAL)

850 0 850 1,700
m

1:90,000

NAD 1983 UTM Zone 14N








Aerial Image: © Harris Corp, Earthstar Geographics LLC Earthstar Geographics SIO © 2015 Microsoft Corporation

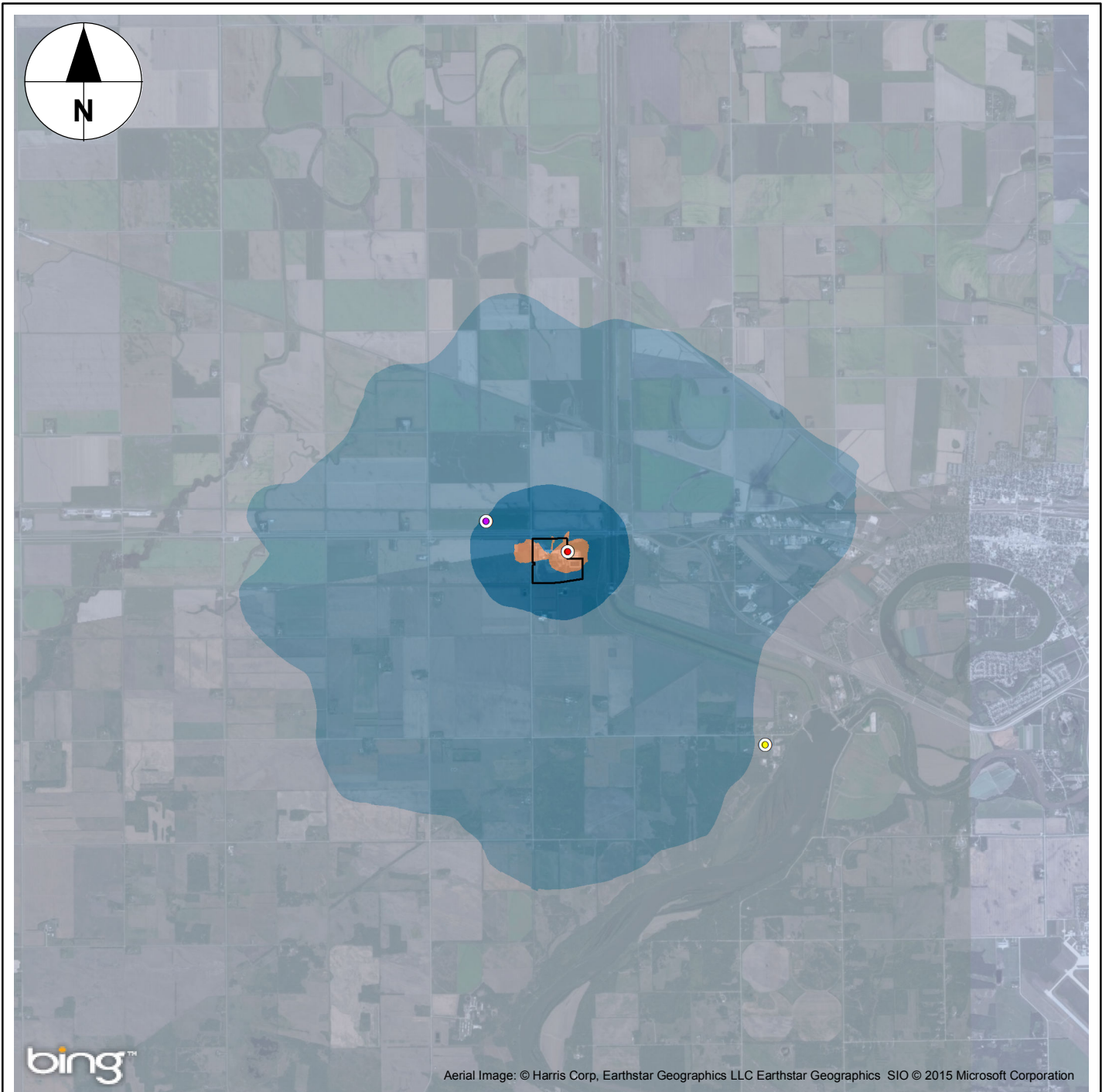
Legend

-  Site Property
-  Maximum Concentration
- Discrete Receptors**
-  Dakota Tipi
-  Nearest Residence

PM_{2.5} (µg/m³)
Maximum Acceptable Level (MAL) = 30 µg/m³

	<10 (<33% of MAL)
	10-20 (33%-66% of MAL)
	20-30 (66%-100% of MAL)
	>30 (>100% of MAL)

850 0 850 1,700

 1:90,000
 NAD 1983 UTM Zone 14N



Aerial Image: © Harris Corp, Earthstar Geographics LLC Earthstar Geographics SIO © 2015 Microsoft Corporation

Legend

- Site Property
- Maximum Concentration
- Discrete Receptors**
- Dakota Tipi
- Nearest Residence

NO₂ (µg/m³)

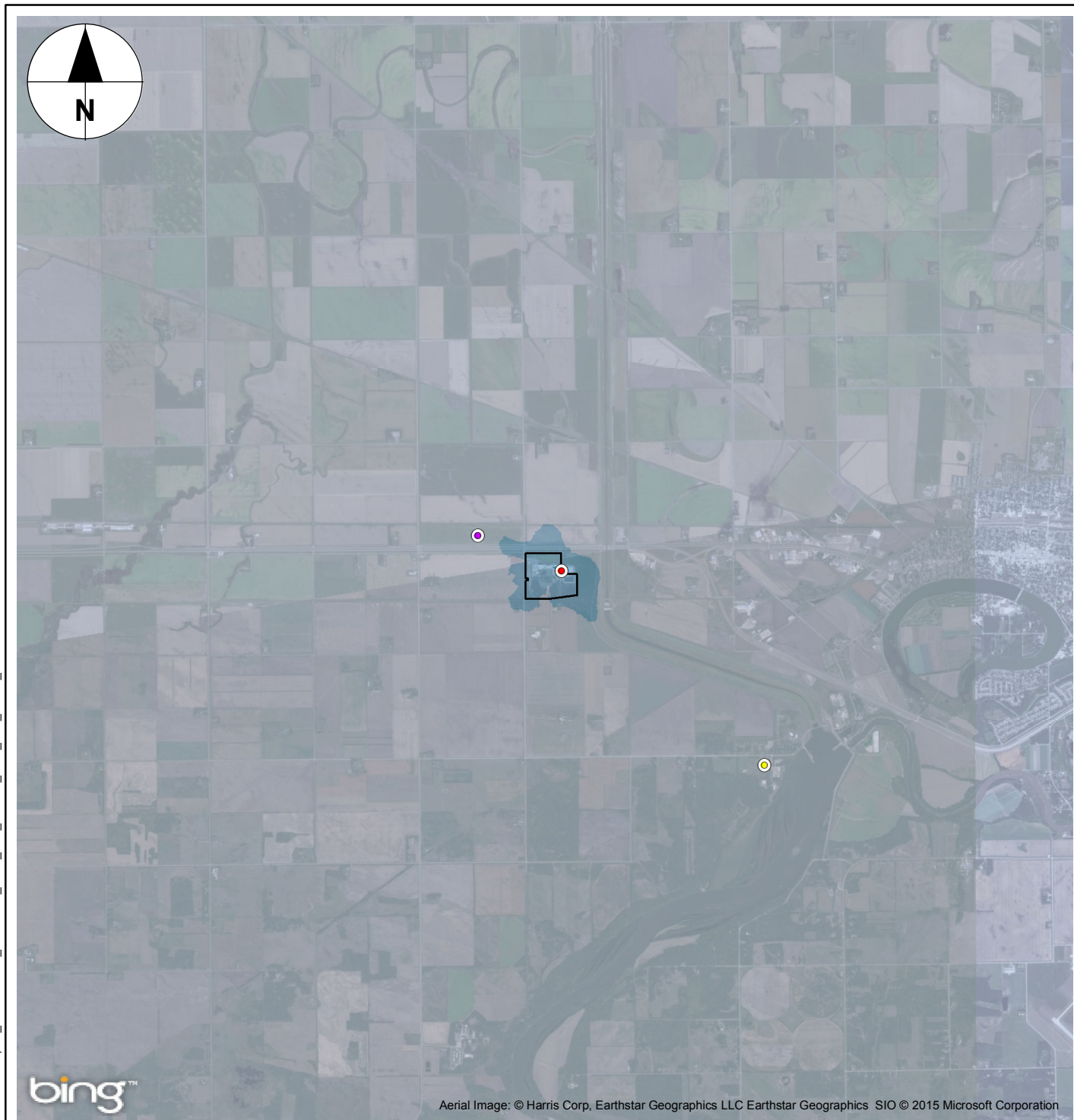
Maximum Acceptable Level (MAL) = 400 µg/m³
Maximum Tolerable Level (MTL) = 1000 µg/m³

	<132 (<33% of MAL)
	132-264 (33%-66% of MAL)
	264-400 (66%-100% of MAL)
	400-1000 (100% of MAL-100% of MTL)
	>1000 (>100% of MTL)

890 0 890 1,780
m

1:94,160

NAD 1983 UTM Zone 14N



Aerial Image: © Harris Corp, Earthstar Geographics LLC Earthstar Geographics SIO © 2015 Microsoft Corporation

Legend

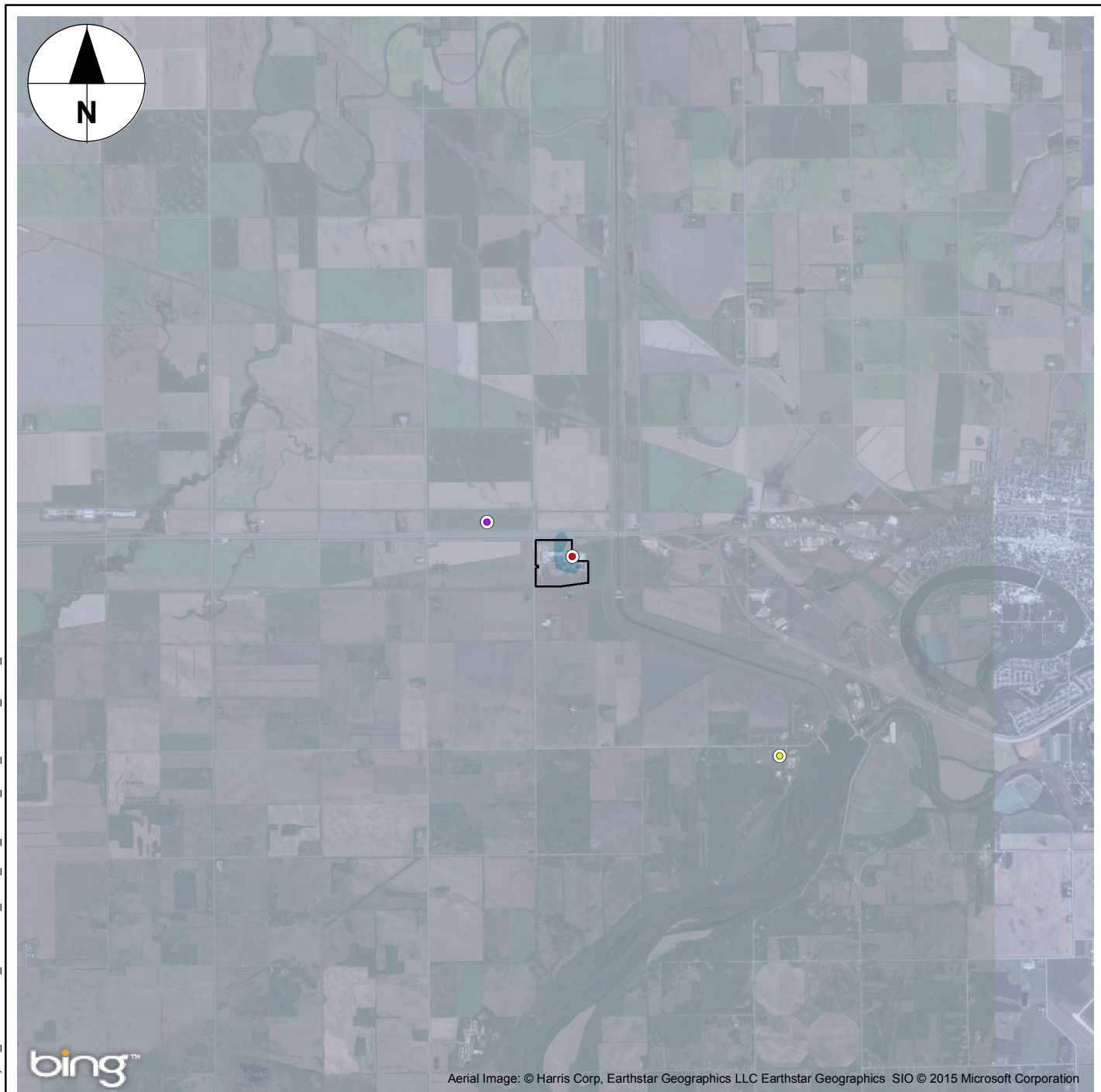
- Site Property
- Maximum Concentration
- Discrete Receptors**
- Dakota Tipi
- Nearest Residence

NO₂ (µg/m³)
Maximum Acceptable Level (MAL) = 200 µg/m³

	<66 (<33% of MAL)
	66-132 (33%-66% of MAL)
	132-200 (66%-100% of MAL)
	>200 (>100% of MAL)

850 0 850 1,700

 1:90,000
 NAD 1983 UTM Zone 14N



Aerial Image: © Harris Corp, Earthstar Geographics LLC Earthstar Geographics SIO © 2015 Microsoft Corporation

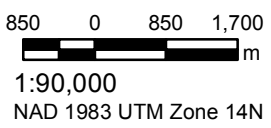
Legend

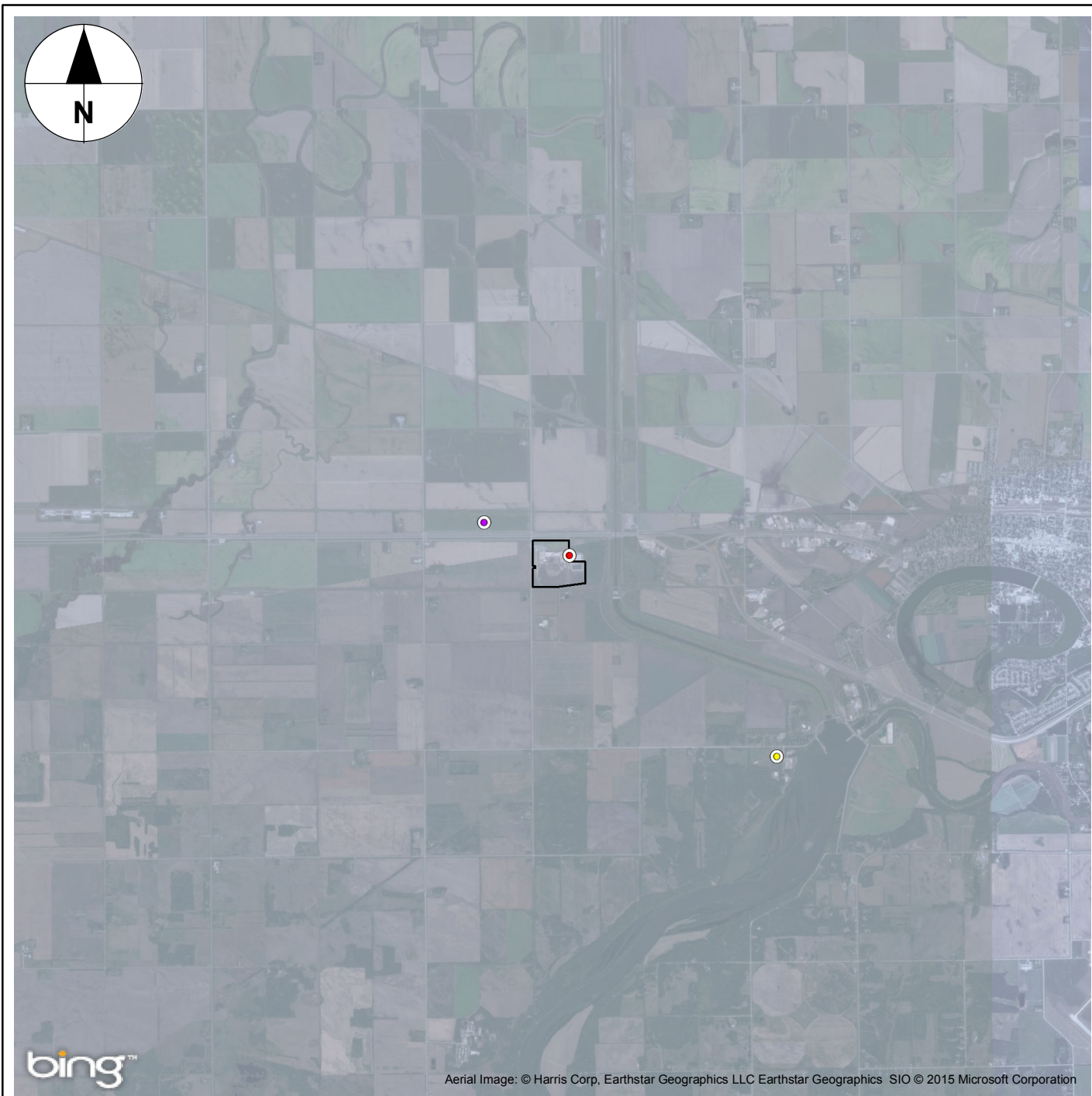
- Site Property
- Maximum Concentration
- Discrete Receptors**
- Dakota Tipi
- Nearest Residence

NO₂ (µg/m³)

Maximum Desirable Level (MDL) = 60 µg/m³
Maximum Acceptable Level (MAL) = 100 µg/m³

	<20 (<33% of MDL)
	20-40 (33%-66% of MDL)
	40-60 (66%-100% of MDL)
	60-100 (100% of MDL-100% of MAL)
	>100 (>100% of MAL)





bing™

Aerial Image: © Harris Corp, Earthstar Geographics LLC Earthstar Geographics SIO © 2015 Microsoft Corporation

Legend

- Site Property
- Maximum Concentration

Discrete Receptors

- Dakota Tipi
- Nearest Residence

CO (mg/m³)

Maximum Desirable Level (MDL) = 15 mg/m³
 Maximum Acceptable Level (MAL) = 35 mg/m³

	<5 (<33% of MDL)
	5-10 (33%-66% of MDL)
	10-15 (66%-100% of MDL)
	15-35 (100% of MDL-100% of MAL)
	>35 (>100% of MAL)

850 0 850 1,700
 m

1:90,000

NAD 1983 UTM Zone 14N



bing™

Aerial Image: © Harris Corp, Earthstar Geographics LLC Earthstar Geographics SIO © 2015 Microsoft Corporation

Legend

- Site Property
- Maximum Concentration
- Discrete Receptors**
- Dakota Tipi
- Nearest Residence

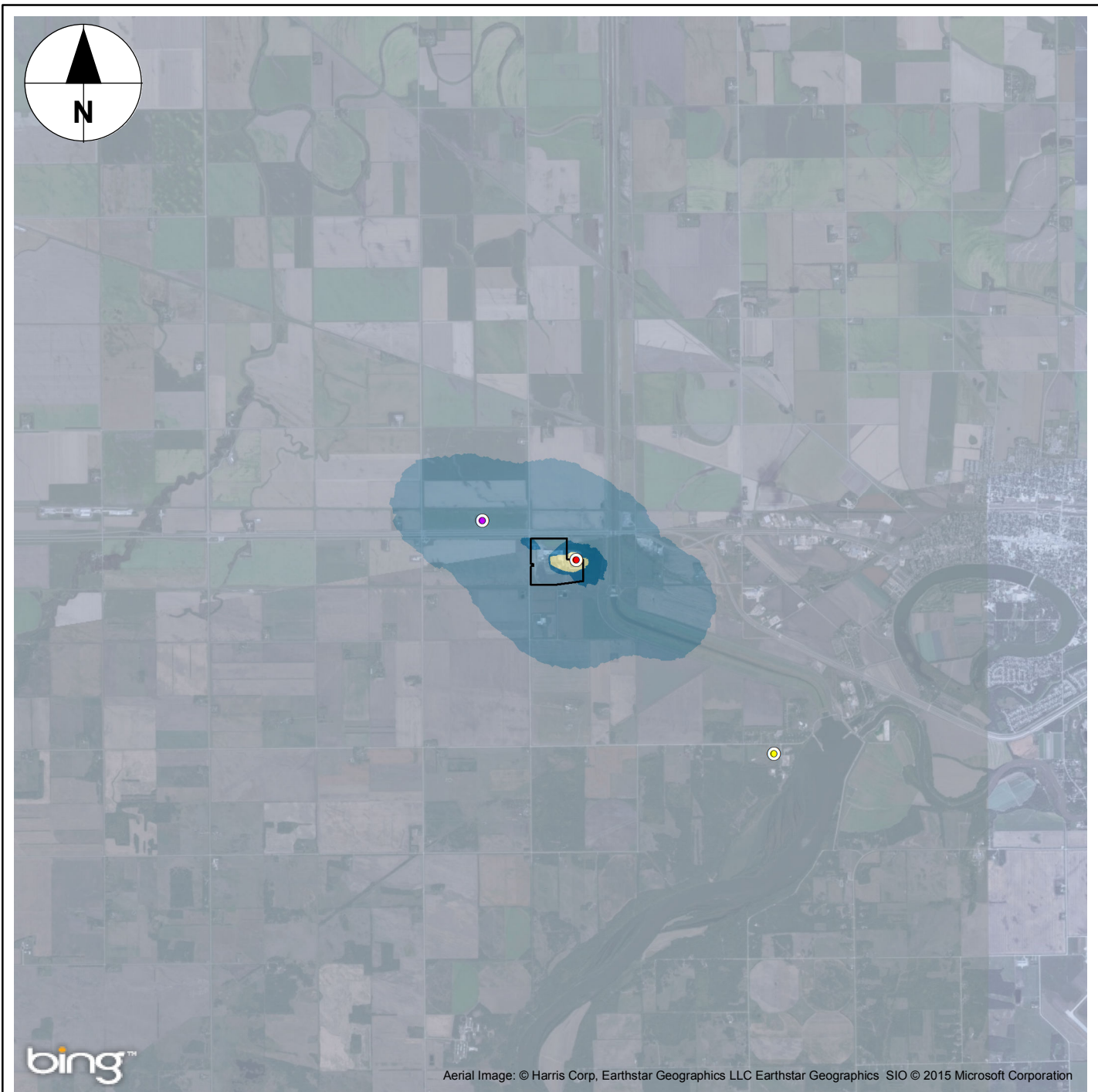
CO (mg/m³)

Maximum Desirable Level (MDL) = 6 mg/m³
Maximum Acceptable Level (MAL) = 15 mg/m³
Maximum Tolerable Level (MTL) = 20 mg/m³

	<2 (<33% of MDL)
	2-4 (33%-66% of MDL)
	4-6 (66%-100% of MDL)
	6-15 (100% of MDL-100% of MAL)
	15-20 (100% of MAL-100% of MTL)
	>20 (100% of MTL)

850 0 850 1,700

 1:90,000
 NAD 1983 UTM Zone 14N



Aerial Image: © Harris Corp, Earthstar Geographics LLC Earthstar Geographics SIO © 2015 Microsoft Corporation

Legend

- Site Property
- Maximum Concentration
- Discrete Receptors**
- Dakota Tipi
- Nearest Residence

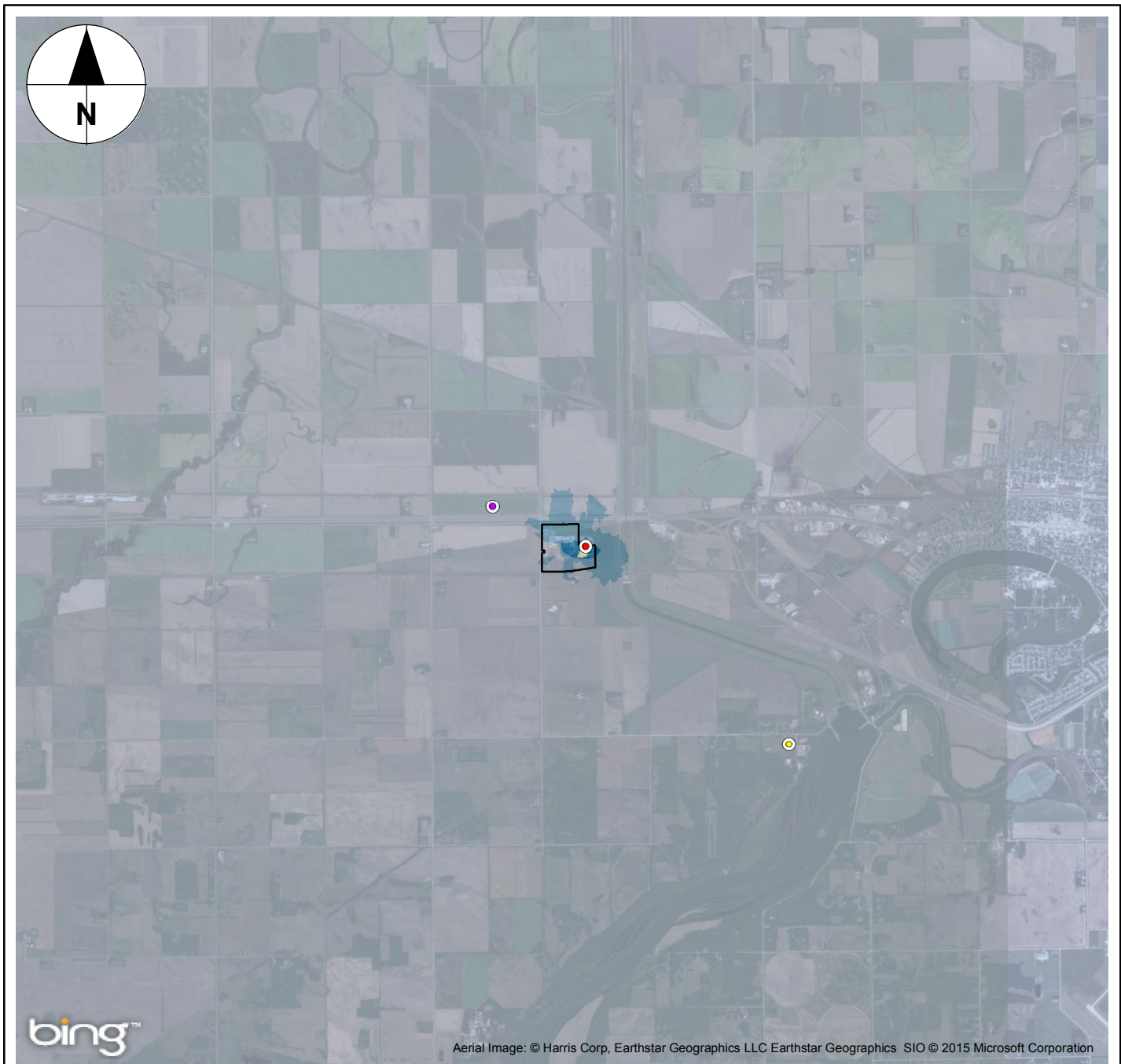
SO₂ (µg/m³)

Maximum Desirable Level (MDL) = 450 µg/m³
Maximum Acceptable Level (MAL) = 900 µg/m³

	<148.5 (<33% of MDL)
	148.5-297 (33%-66% of MDL)
	297-450 (66%-100% of MDL)
	450-900 (100% of MDL-100% of MAL)
	>900 (>100% of MAL)

850 0 850 1,700

 1:90,000
 NAD 1983 UTM Zone 14N



bing™

Aerial Image: © Harris Corp, Earthstar Geographics LLC Earthstar Geographics SIO © 2015 Microsoft Corporation

Legend

- Site Property
- Maximum Concentration
- Discrete Receptors**
- Dakota Tipi
- Nearest Residence

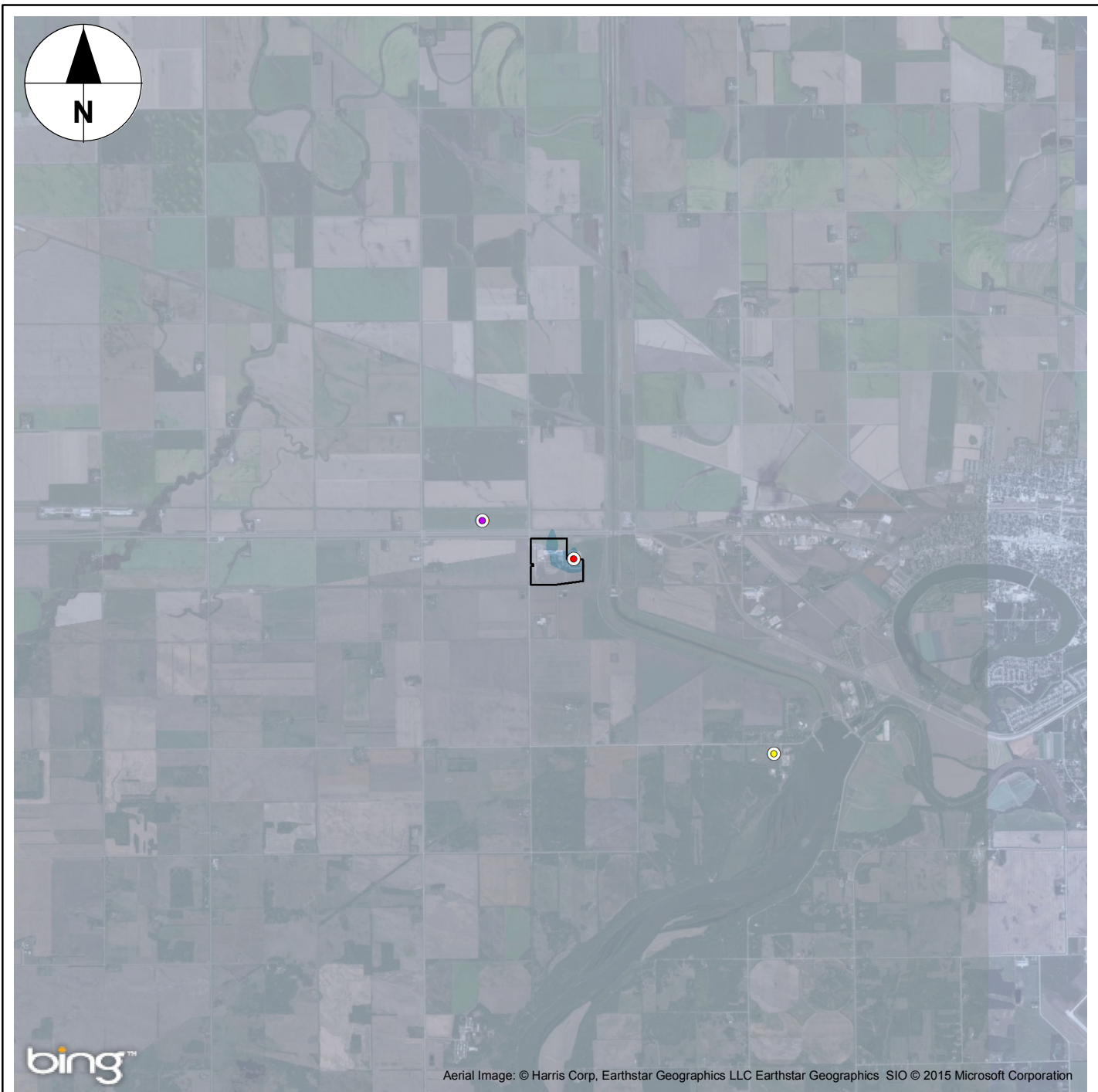
SO₂ (µg/m³)

Maximum Desirable Level = 150 µg/m³
Maximum Acceptable Level = 300 µg/m³
Maximum Tolerable Level = 800 µg/m³

	<50 (<33% of MDL)
	50-100 (33%-66% of MDL)
	100-150 (66%-100% of MDL)
	150-300 (100% of MDL-100% of MAL)
	300-800 (100% of MAL-100% of MTL)
	>800 (>100% of MTL)

850 0 850 1,700
 m

1:90,000
 NAD 1983 UTM Zone 14N



bing™

Aerial Image: © Harris Corp, Earthstar Geographics LLC Earthstar Geographics SIO © 2015 Microsoft Corporation

Legend

- Site Property
- Maximum Concentration
- Discrete Receptors**
- Dakota Tipi
- Nearest Residence

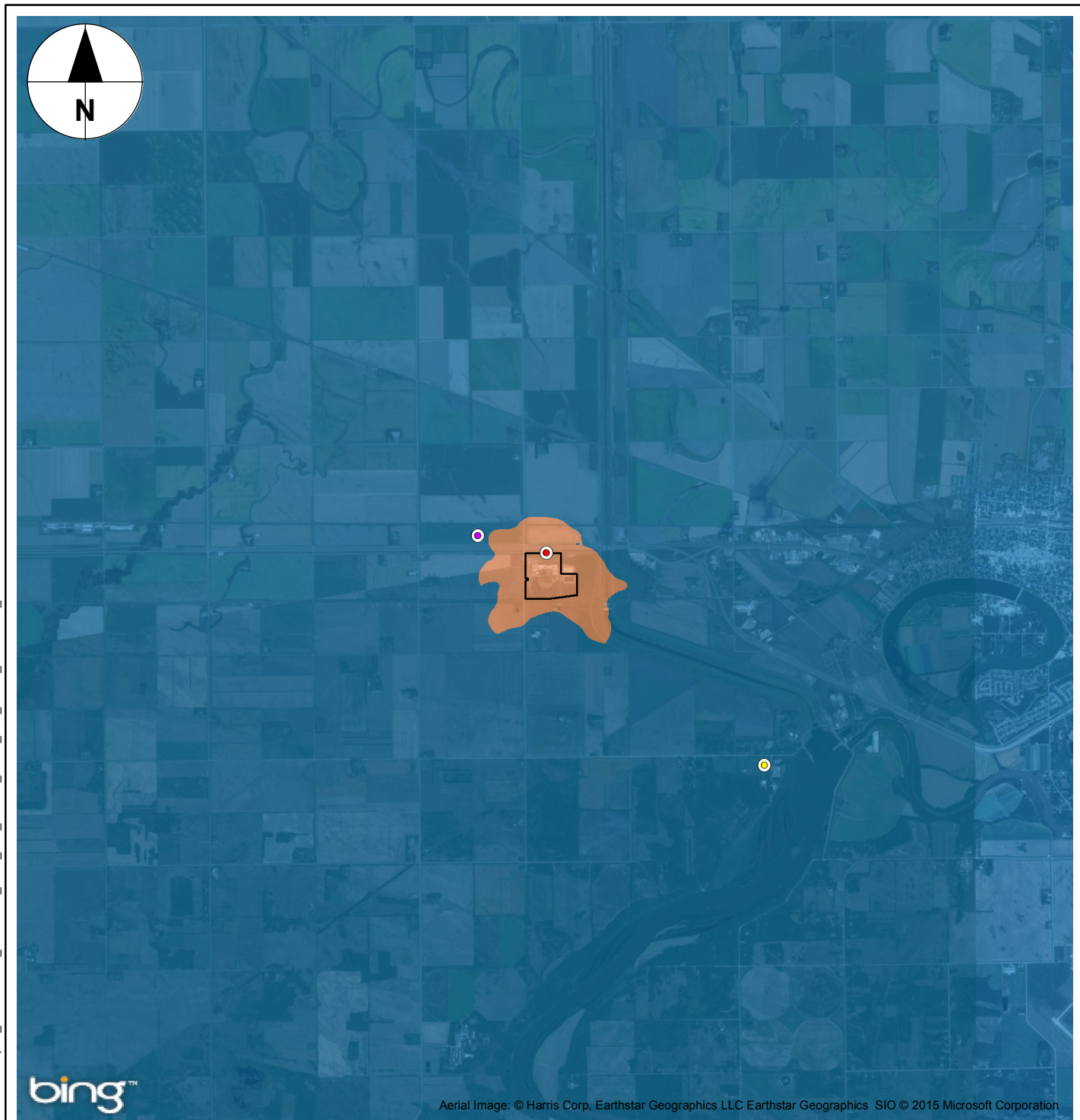
SO₂ (µg/m³)

Maximum Desirable Level (MDL) = 30 µg/m³
Maximum Acceptable Level (MAL) = 60 µg/m³

	<10 (<33% of MDL)
	10-20 (33%-66% of MDL)
	20-30 (66%-100% of MDL)
	30-60 (100% of MDL-100% OF MAL)
	>60 (>100% of MAL)

850 0 850 1,700

 1:90,000
 NAD 1983 UTM Zone 14N



Aerial Image: © Harris Corp, Earthstar Geographics LLC Earthstar Geographics SIO © 2015 Microsoft Corporation

Legend

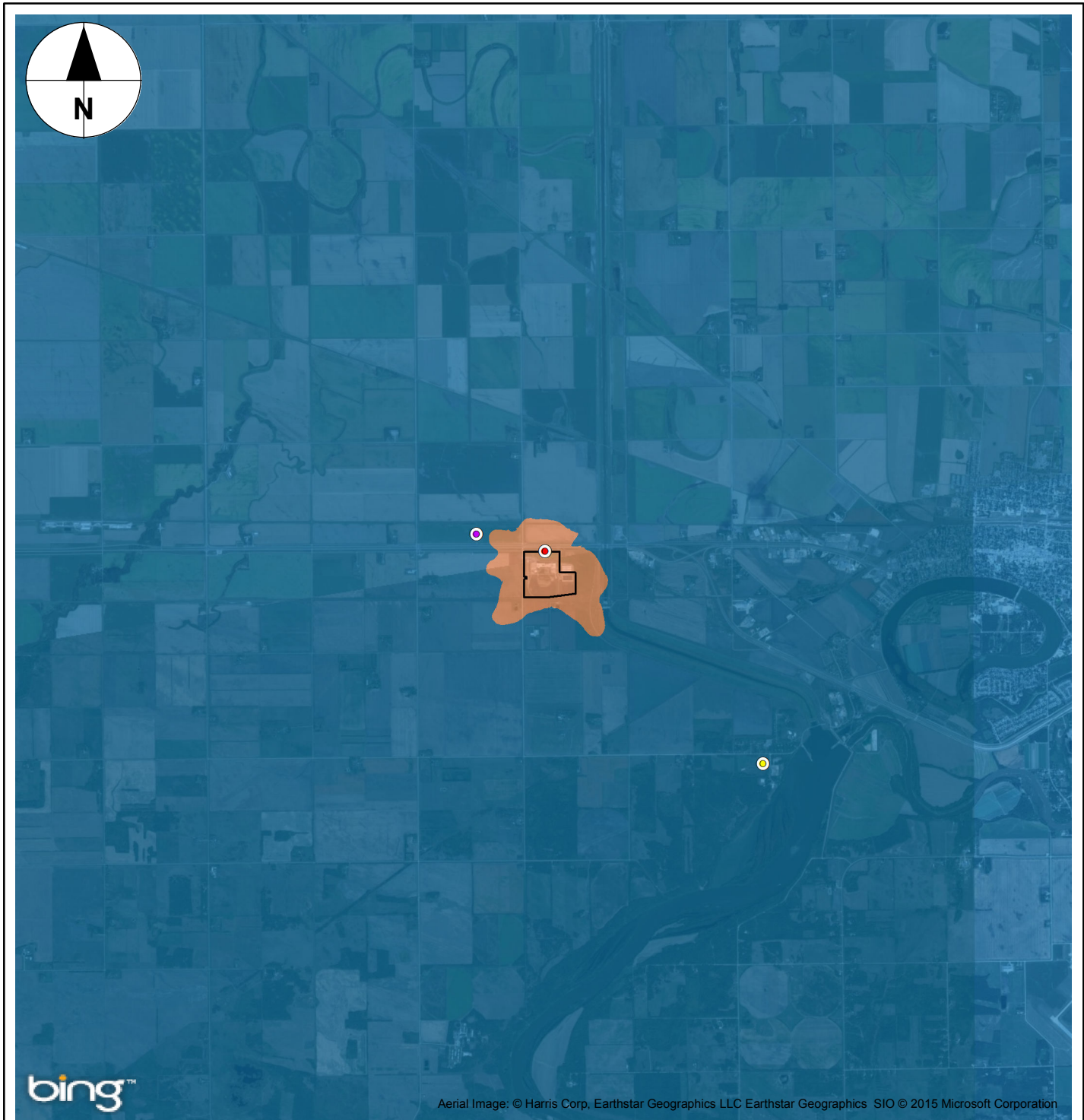
- Site Property
- Maximum Concentration
- Discrete Receptors**
- Dakota Tipi
- Nearest Residence

PM₁₀ (µg/m³)
Maximum Acceptable Level (MAL) = 50 µg/m³

	<16.5 (<33% of MAL)
	16.5-33 (33%-66% of MAL)
	33-50 (66%-100% of MAL)
	>50 (>100% of MAL)

850 0 850 1,700

 1:90,000
 NAD 1983 UTM Zone 14N



bing™

Aerial Image: © Harris Corp, Earthstar Geographics LLC Earthstar Geographics SIO © 2015 Microsoft Corporation

Legend

- Site Property
- Maximum Concentration
- Discrete Receptors**
- Dakota Tipi
- Nearest Residence

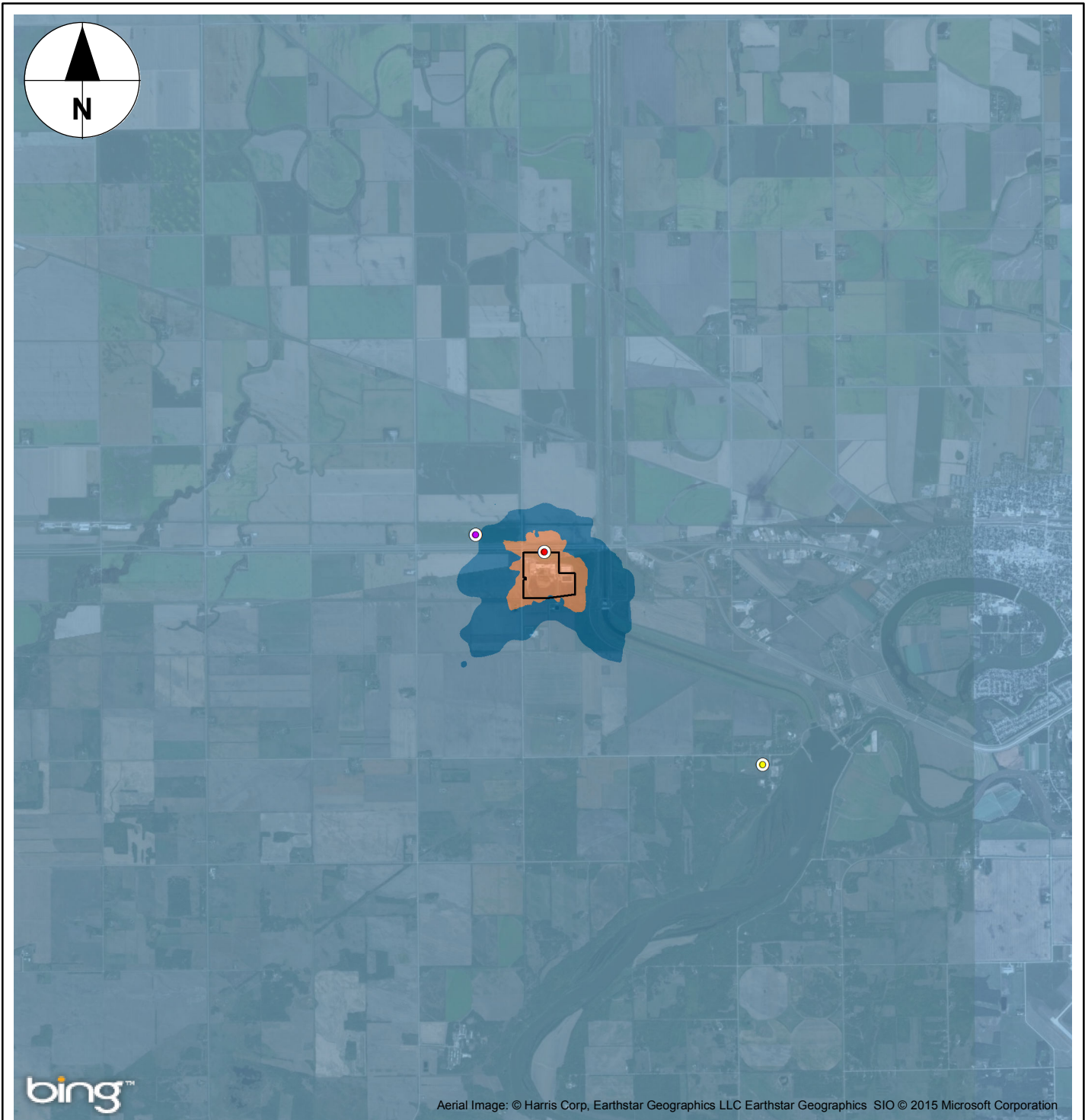
PM₁₀ (µg/m³)

Maximum Acceptable Level (MAL) = 50 µg/m³

	<16.5 (<33% of MAL)
	16.5-33 (33%-66% of MAL)
	33-50 (66%-100% of MAL)
	>50 (>100% of MAL)

850 0 850 1,700

 1:90,000
 NAD 1983 UTM Zone 14N



Aerial Image: © Harris Corp, Earthstar Geographics LLC Earthstar Geographics SIO © 2015 Microsoft Corporation

Legend

- Site Property
- Maximum Concentration
- Discrete Receptors**
- Dakota Tipi
- Nearest Residence

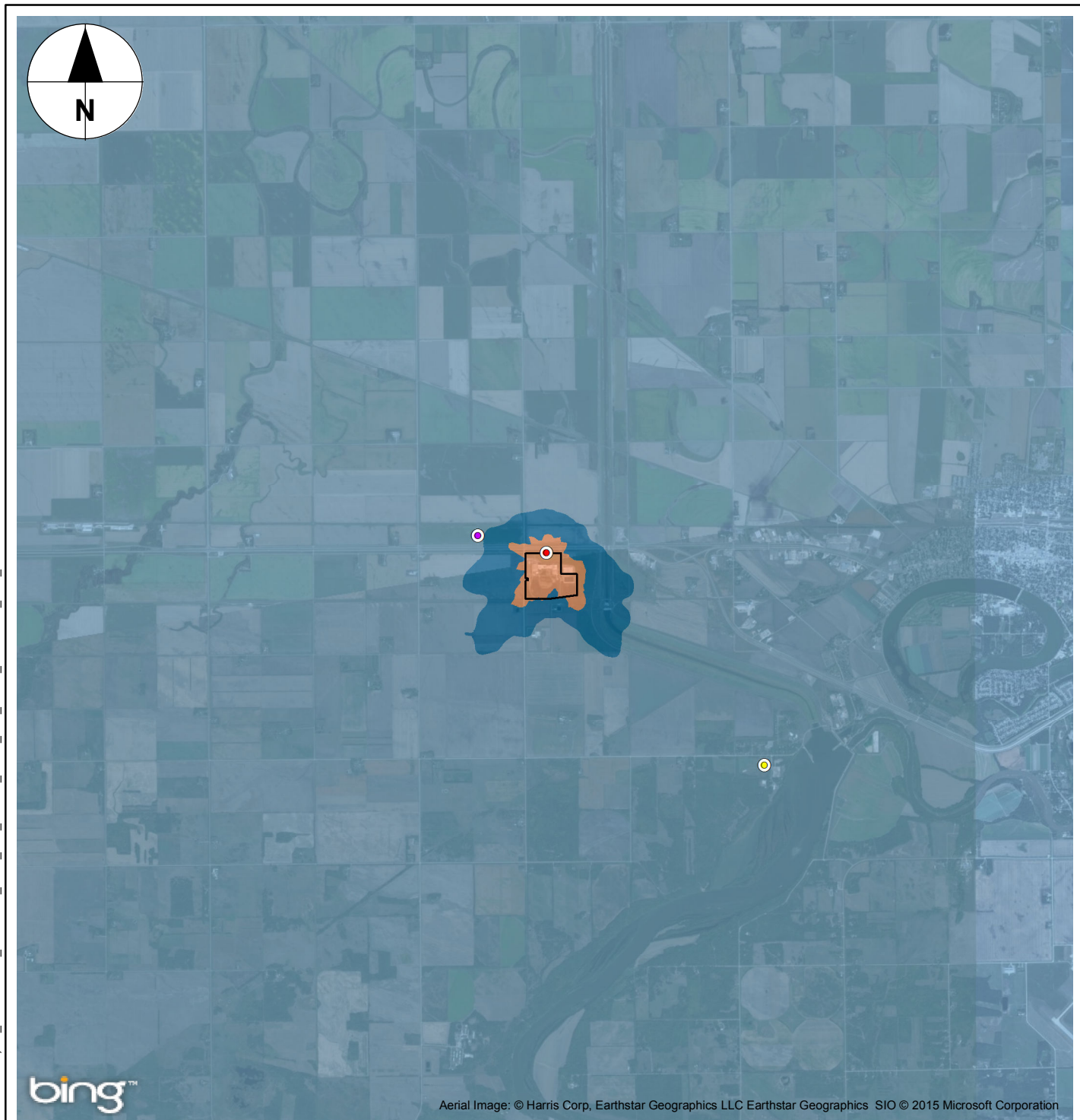
PM_{2.5} (µg/m³)

Maximum Acceptable Level (MAL) = 30 µg/m³

- <10 (<33% of MAL)
- 10-20 (33%-66% of MAL)
- 20-30 (66%-100% of MAL)
- >30 (>100% of MAL)

850 0 850 1,700

 1:90,000
 NAD 1983 UTM Zone 14N



Aerial Image: © Harris Corp, Earthstar Geographics LLC Earthstar Geographics SIO © 2015 Microsoft Corporation

Legend

- Site Property
- Maximum Concentration
- Discrete Receptors**
- Dakota Tipi
- Nearest Residence

PM_{2.5} (µg/m³)
Maximum Acceptable Level (MAL) = 30 µg/m³

	<10 (<33% of MAL)
	10-20 (33%-66% of MAL)
	20-30 (66%-100% of MAL)
	>30 (>100% of MAL)

850 0 850 1,700

 1:90,000
 NAD 1983 UTM Zone 14N